

# CERTIFICATE OF LOCATION OF GOVERNMENT CORNER

County of Anoka

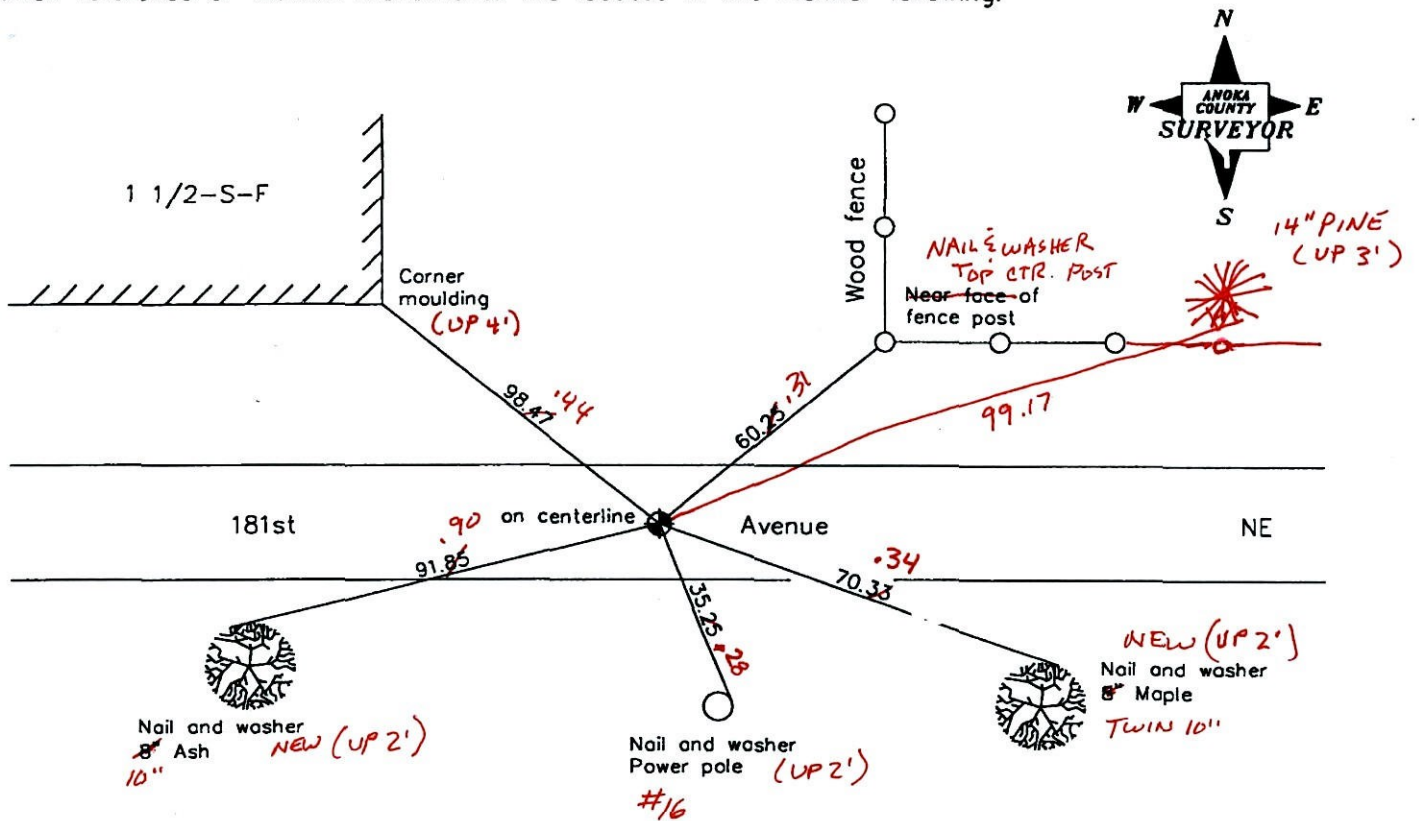
State of Minnesota

Northwest Corner of Sec. 5 Township 32 Range 23

I hereby certify that on the 18th day of June, 1943, I found the described corner which was evidenced by a granite monument

and I further certify that to perpetuate the location of said corner, I did, at the exact location thereof, place a permanent marker consisting of a cast iron monument on centerline

which reference or witness monuments are located in the manner following:



3-14-11  
BK-SS  
~~T/T~~  
Revised date

11/15/91
7/13/92
9/01/92
8/08/96
9/26/01

N.A.D. 1983 Coordinates  
(1996 adjustment)

County Project Coordinates	State Plane Coordinates
Northing <u>195817.5719</u>	Y _____
Easting <u>505701.5069</u>	X _____

Date 9/26/01



# CERTIFICATE OF LOCATION OF GOVERNMENT CORNER

County of Anoka

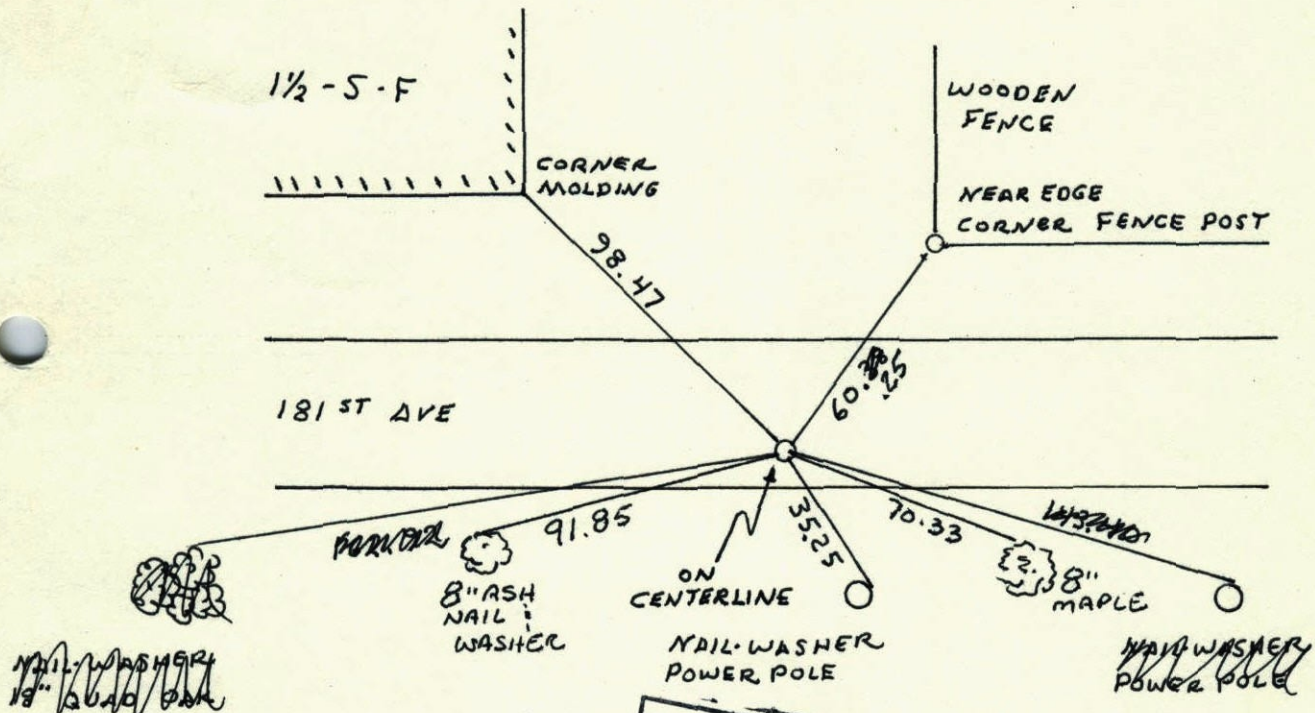
State of Minnesota

NORTHWEST Corner of Sec. 5 Township 32 Range 23

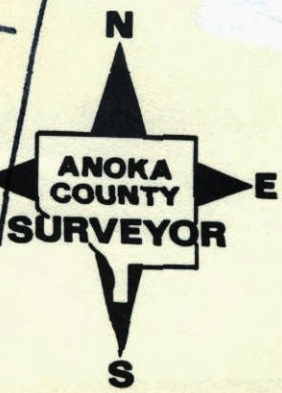
I hereby certify that on the 18<sup>th</sup> day of JUNE, 1943, I found the described corner which was evidenced by GRANITE MONUMENT

and I further certify that to perpetuate the location of said corner, I did, at the exact location thereof, place a permanent marker consisting of CASTIRON MONUMENT ON CENTERLINE

which reference or witness monuments are located in the manner following:



N.A.D.	1983	Co-ordinates
County	Project	Co-ordinates
Northing	195817.5719	
Easting	505701.5069	
State Plane Co-ordinates		
Y	_____	
X	_____	
Revised date	Date	

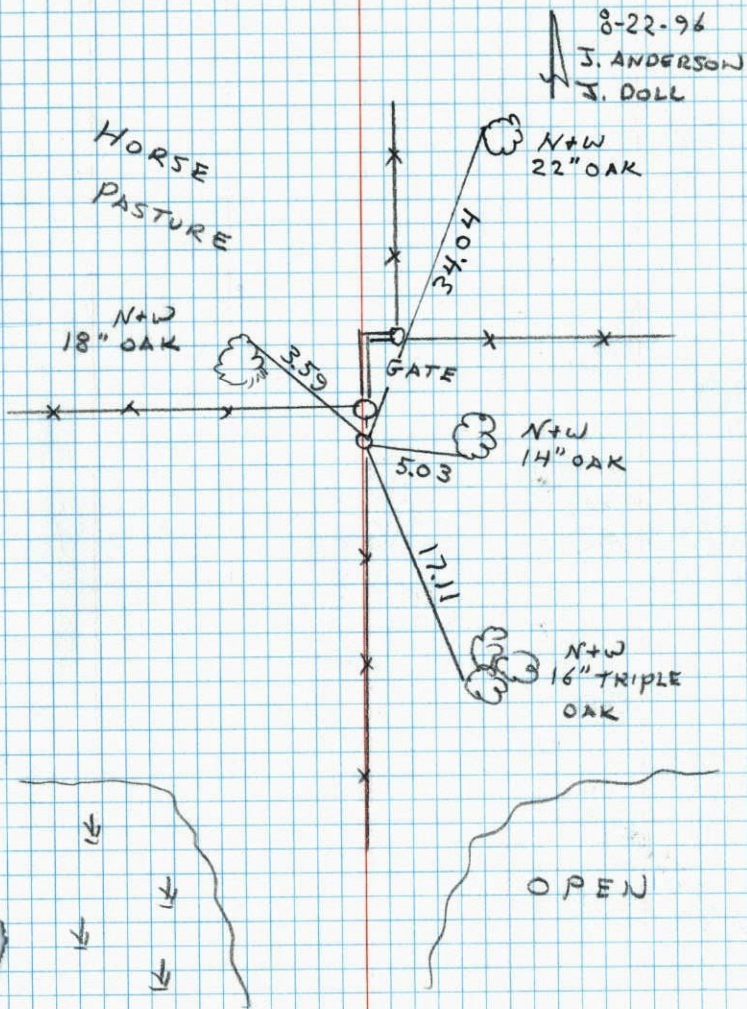


Revised date	Revised date	Revised date
11-15-91		
7-13-92		
9-1-92		
8-8-96		
9-26-01		



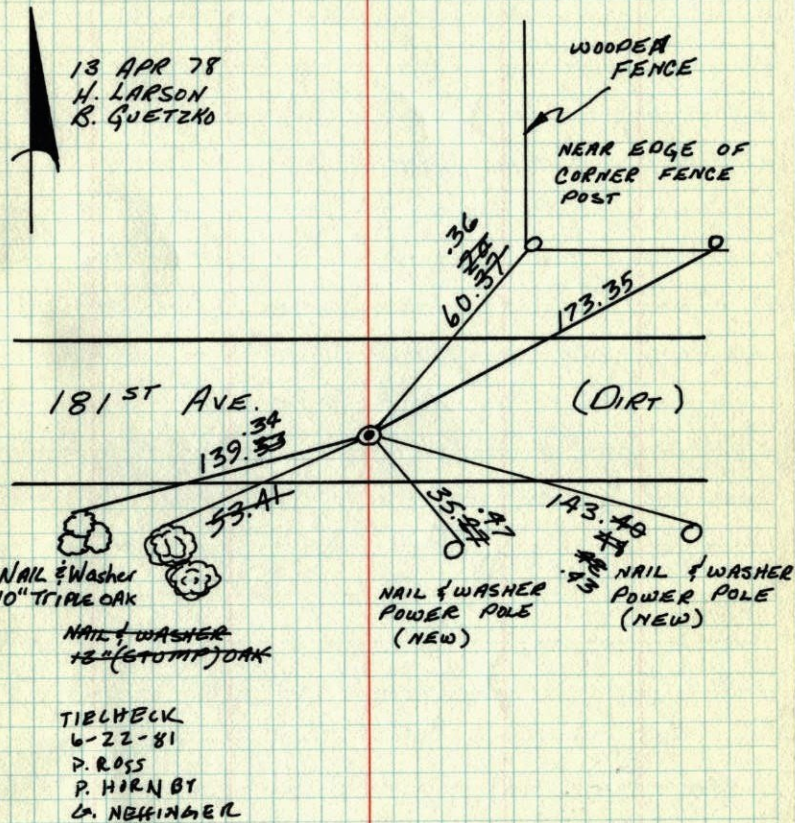
NW COR. SEC. 5 T32 R23

RETIED C.I. MONUMENT



N. W. COR. SECTION 5 - T32 - R23

LOWERED CAST IRON MONUMENT, ALL BUT ONE TIE GONE. MONUMENT FOUND TO BE IN RIGHT PLACE FROM RESURVEY. CAST IRON DOWN 0.5'±.



TEMPERATURE CORRECTED  
AND HORIZONTALLY  
TAPED MEASUREMENTS

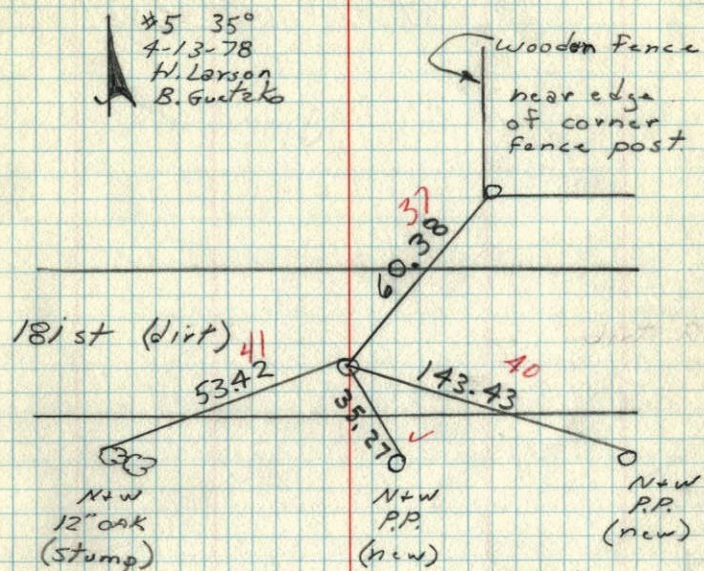
ROLAND W. ANDERSON.  
COUNTY SURVEYOR  
ANOKA COUNTY, MINNESOTA



NW Cor. Section 5 T32 R23

Lowered cast iron monument

All but one tie gone. Mon. Found  
to be in right place from resurvey  
c. 1/2 down .5'±



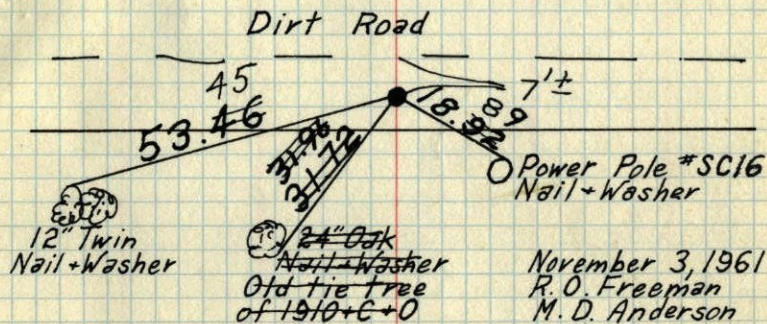
NW Cor. Sec. 5-T32-R23

Granite Monument graded out.

Established Corner from one tie tree  
and stump of tie tree. Ties are H.A. Cart-  
wright's. Ties have blaze and 3 small  
nails.

Set Cast Iron from ties down ~~1.0±~~ <sup>0.6±</sup>

*Retied H.L.*



Tie Check  
June 20, 1967  
D. Potter  
D. Powell

Tie Check  
June 5, 1975  
D. Dahl  
B. Sannerud  
G. Adams

November 3, 1961  
R. O. Freeman  
M. D. Anderson

Tie Check  
June 7, 1971  
R. Brien  
J. Boettcher  
B. Olson

TEMPERATURE CORRECTED AND HORIZONTALLY TAPED MEASUREMENTS

ROLAND W. ANDERSON  
COUNTY SURVEYOR  
ANOKA COUNTY, MINNESOTA

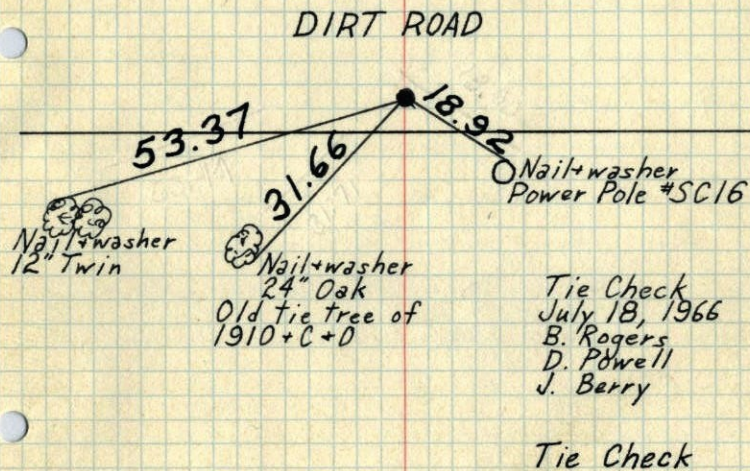


NW Cor. Sec. 5-T32-R23

Granite Monument graded out.

Established Corner from one tie tree and stump of tie tree. Ties are H. A. Cartwright's. Ties have blaze and 3 small nails.

Set cast iron from ties down 1.0'±.



TEMPERATURE CORRECTED  
AND HORIZONTALLY  
TAPED MEASUREMENTS

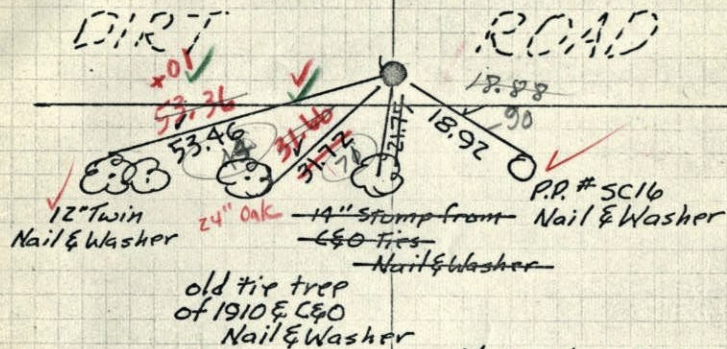
ROLAND W. ANDERSON  
COUNTY SURVEYOR  
ANOKA COUNTY, MINNESOTA

N.W. Cor. Sec. 5-32-23

Granite mon. graded out.

Established Cor. from one tie tree and stump of tie tree. Ties are HAC's. Ties have blaze and 3 small nails.

Set cast iron from ties down 1.0'±.



TEMPERATURE CORRECTED  
AND HORIZONTALLY  
TAPED MEASUREMENTS

ROLAND W. ANDERSON  
COUNTY SURVEYOR  
ANOKA COUNTY, MINNESOTA

November 3, 1961

R.D. Freeman  
M.D. Anderson

Retie 7/16/64

M. D. Anderson  
R. Carlson

Retie 7/18/66

B. Rogers  
D. Powell  
J. Berry

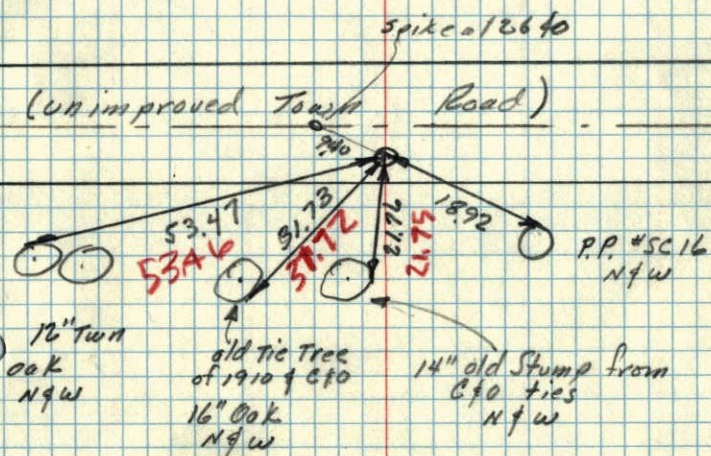
temp #5

temp. 37°



3 Nov 1961  
 Freeman Anderson  
 +27°

NW Cor Sec 5-32-23 Ham Lake  
 Granite Mon. Graded out. Established  
 Cor from one tie tree of H.A.C.'s &  
 one Stump of tie tree. Stump & tie  
 tree have blaze & 3 small nails in blaze  
 Set last Iron Mon from ties, down 10'±

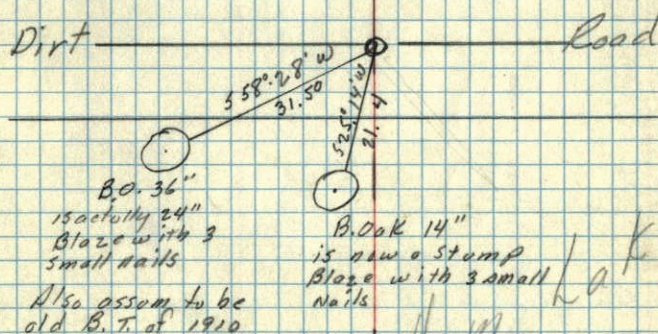


TEMP.  
 CORR.

1 Nov. 1961  
 Freeman Anderson  
 +47°

Ties to NW Cor of Sec 5-32-23 Ham Lake  
 Granite Mon Graded out reset from  
 Cartwright's tie tree. Reset with  
 14" x 1/2" iron pipe down 1/2'±  
 Two Trees of Cartwright's Remain. P.P.'s are  
 gone

East  
 Bethel

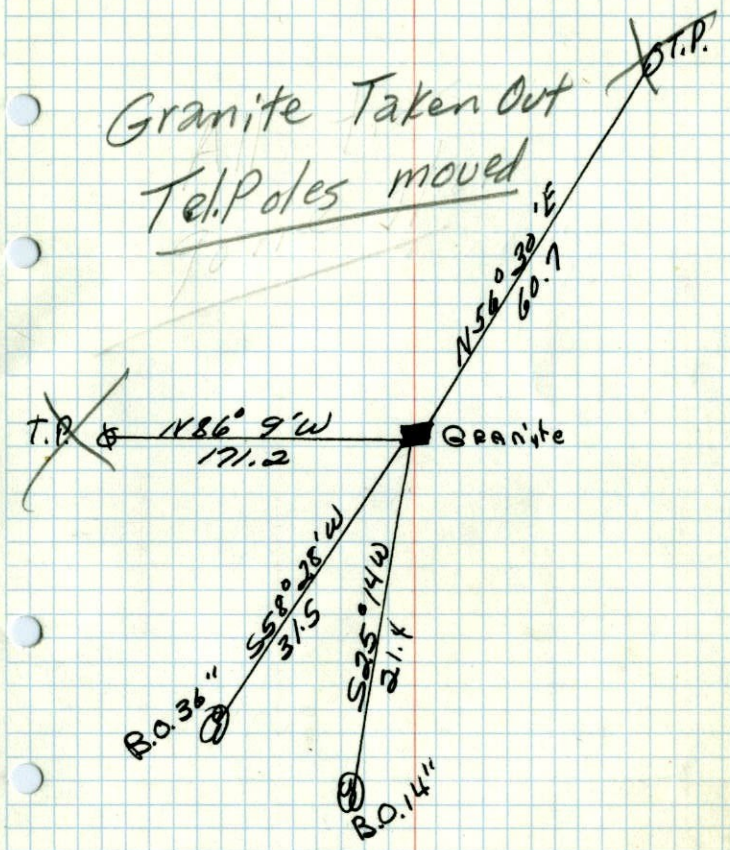


Note: Old tie from 1910  
 8" B. Oak S 61° 30' W 32.34'



NW CORNER OF Sec. 5 T32 R23  
a granite in road

Granite Taken Out  
Tel. Poles moved



June 18, 1943  
Cartwright